

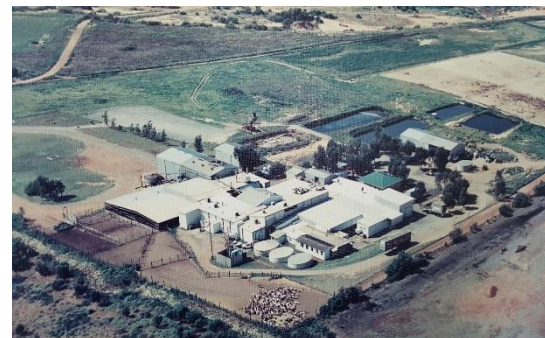


For Sale- Geraldton Meat Exports

Tier 2 Export Abattoir

Mutton – Ram - Rangeland Goat – Lamb

Overview



GME is a fully licensed AQIS approved Tier 2 export plant capable of processing up to 2000 small stock a day.

Since 1995 GME has held an excellent international reputation for being Western Australia's premier exporter of processed rangeland goat and mutton. Meat importers and distributors trust GME for quality and consistency of supply.

GME has been closed for seasonal shutdown since June 2015. The plant has since been maintained and a full time caretaker is onsite.

Rangeland Goat: GME specializes in skin on and skin off rangeland goat supplying the rapidly growing international demand for goat which is both the most consumed red meat and fastest growing consumed meat in the world. GME has processed up to 207,000 rangeland goat per annum. West Australian Rangeland goat is appreciated as the highest quality goat in the world as WA goat is lean and strong due to the native bush habitat and diet.



Sheep and Ram: Our buyers source only the finest 1-2 score Western Australian sheep which suits our current markets. The result for our valued clients is evident in the exceptional quality of our product which is tailored for specific markets.

Stock : GME is the gateway to the North. GME is strategically located to purchase goat and sheep from the Southern Rangelands including the Gascoyne, Pilbara and surrounding areas. All stock from this area passes GME on its way South - this presents considerable savings in purchasing and freight.

Export Approved Markets: GME is AQIS approved to export to: Taiwan, Malaysia, Vietnam, Japan, Korea, Canada, Jamaica, Russia, Saudi Arabia, South Africa, Mexico, Indonesia and Trinidad & Tobago.

Halal Certified: All meat processed on site at GME is slaughtered to Halal requirements. We have an on-site Halal supervisor and inspector. The premises are audited by the Geraldton Mosque, Katanning Mosque and The Western Australian Halal Authority. GME is one of the few WA plants to pass last year's Malaysian JAKIM Halal audit.

Link to Address: [63 Abattoir Road, Moonyoonooka, Western Australia 6532](#)



The information contained in this overview is not to be constructed as a warranty or promise as the correctness of the information or that it should form part of any contract or agreement. Interested parties must be sure to undertake their own independent enquiries and investigations, and in this way satisfy themselves that any details provided are true and correct. Do not act without having checked the accuracy of this information.

Location: 500km North of Perth, 15km East of Geraldton. 4km East of Geraldton Airport, no residential neighbours. GME is located in an elevated area at the beginning of the Moresby Ranges. Surrounding properties in the area comprise of various uses including NBN, egg farm, turf farm and general small farming rural hobby farm type properties. GME is located on the southern side of Geraldton Mount Magnet Rd. Geraldton Mount Magnet Rd is a high volume heavy vehicle access route and provides direct access to the city centre and major facilities.

Land: Freehold interest. 79.40 hectares or 132.13 acres

Services: The property is serviced by scheme water, bore water, electricity, telephone, internet, bottled gas and septic sewerage.

Zoning: General farming and current usages is approved under the City of Geraldton/Greenough Planning Scheme

Plant Building Area

Buildings: Administration office. AQIS and Plant Veterinarian office. Maintenance workshop. Skin shed. Storage and supplies sheds. Caretaker accommodation.

Parking

Water License

Water Storage

Workforce

Product: Mutton, ram, rangeland goat and products



Stock Supplier Database

DEC

AUSMEAT

Settling Ponds



Slaughterfloor

Hide Puller

Offal: Recovery of runners, tripe, heart, liver and pluck. Tripe collection room 5.1m x 2.2sqm, runner room 7.5m x 3.6m, offal collection room 4.5m x 3.6m.

Refrigeration Gas: Freon

Chillers: 4 x chillers

Freezers: 5 x freezers

Blast Freezers: 3 x blast freezers

Storage Freezers: 2 x storage freezers, rail and stillage



The information contained in this overview is not to be constructed as a warranty or promise as the correctness of the information or that it should form part of any contract or agreement. Interested parties must be sure to undertake their own independent enquiries and investigations, and in this way satisfy themselves that any details provided are true and correct. Do not act without having checked the accuracy of this information.

Boning Room: 15x11m

Load Out: 2 track

Yards: 133m x 24m stockyards

Raised Lairage 25.6 x 20m

Draft yards: 133 x 24m

Boiler: Tomlinson Steam Boiler, 3000KW Power Output, Registered 16th April 2015.

Rendering: Rendering plant and equipment onsite.

Skins Shed: 2 x Agitators

Generator: FG Wilson 550KVA 87.5 hours

Stock system: Triton integrated production management solution

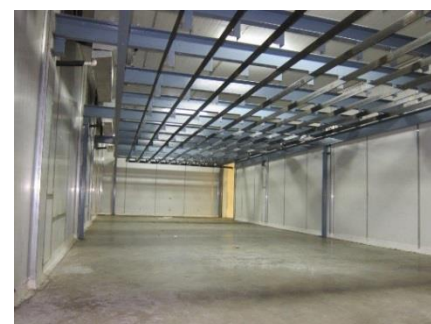
Paycom CCTV: Digital TV surveillance with 14 cameras. Able to view slaughterfloor and plant remotely through camera and computers.

Digital Timecard System

Opportunities for future development of GME

- Process chilled lamb for the middle east
- Process lamb for the local WA market
- Produce retail ready product
- Expand boning room cuts
- Process beef
- Build additional freezers and extend the boning room.

GME land and plant are offered for sale. Please submit Expressions of Interest to mike@gmexports.com.au or call 0418 950 056. All enquiries will be treated with strict confidence.



The information contained in this overview is not to be constructed as a warranty or promise as the correctness of the information or that it should form part of any contract or agreement. Interested parties must be sure to undertake their own independent enquiries and investigations, and in this way satisfy themselves that any details provided are true and correct. Do not act without having checked the accuracy of this information.